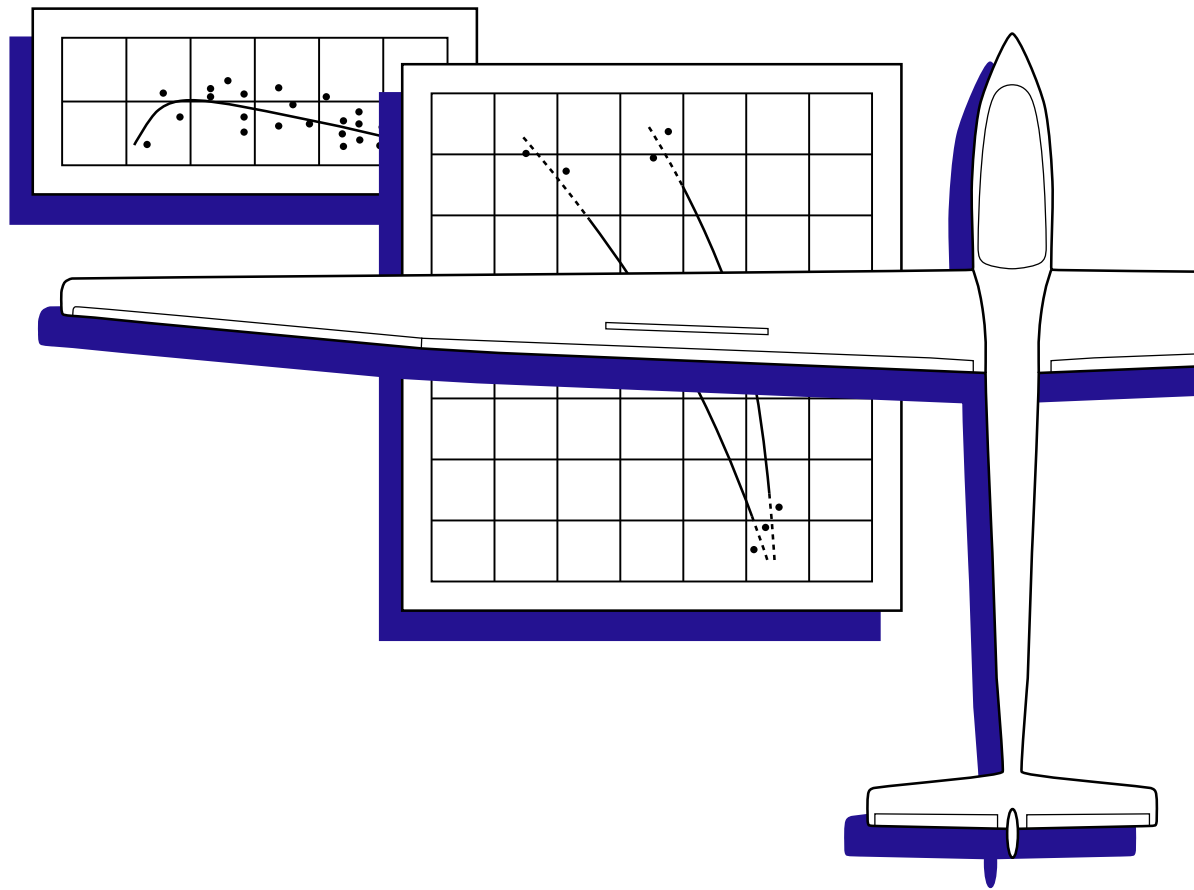


Technical Soaring

An International Journal



- **Wind Tunnel Measurements on Details of Laminar Wings**

*The Journal of the
Organisation Scientifique et Technique Internationale du Vol à Voile
(International Scientific and Technical Organization for Gliding)
ISSN 0744-8996*



EDITOR-IN-CHIEF

Dr. Judah Milgram

ASSOCIATE EDITORS

Prof. Dr. Zafer Aslan — *Turkey*
Chair, Scientific Section and Chair, Meteorological Panel

Prof. Dr. Mark Maughmer — *USA*
Chair, Technical Section

Dipl. Ing. Helmut Fendt — *Germany*
Chair, Sailplane Development Panel

Dipl. Ing. Ian Oldaker — *Canada*
Chair, Training and Safety Panel

Prof. Dr. Goetz Bramesfeld — *Canada*

JOURNAL ON-LINE MANAGER

Em. Prof. Dr. Edward (Ward) Hindman

OSTIV PRESIDENT

Prof. Rolf Radespiel
Germany

OSTIV VICE PRESIDENT

Prof. Dr. Mark Maughmer
USA

MEMBERS OF THE OSTIV BOARD

Prof. Dr. Zafer Aslan — *Turkey*
Prof. Dr. Goetz Bramesfeld — *Canada*
Dipl. Ing. Helmut Fendt — *Germany*
Dr. Judah Milgram — *USA*
Dipl. Ing. Ian Oldaker — *Canada*
Dr. Ing. Lukáš Popelka — *Czech Republic*

Copy editing/Layout: Judah Milgram
Washington, DC USA

© 2015 Organisation Scientifique et Technique Internationale
du Vol à Voile
All rights reserved
ISSN#0744-8996

From the Editor 10

Wind Tunnel Measurements on Details of Laminar Wings
Jürgen Frey 11

Technical Soaring (TS) documents recent advances in the science, technology and operations of motorless aviation.

TS is published quarterly by the Organisation Scientifique et Technique Internationale du Vol à Voile (International Scientific and Technical Organization for Gliding, OSTIV), c/o TU Braunschweig, Institute of Fluid Mechanics, Hermann-Blenk Str. 37, D-38108 Braunschweig, Germany. E-mail: president@ostiv.org; URL: www.ostiv.org.

Subscription is restricted to OSTIV members but material can be submitted by anyone. Rates per calendar year are €25 for students under 25 years of age, €45 for Individual/Local Club Membership; €80 for Scientific/Technical Organization/Library Membership and €250 for Active Members (National Aero Club Members of FAI).

Submitted research papers will be peer-reviewed. Guidelines for preparation and submission of manuscripts can be found in this issue and on the OSTIV website in the 'editor' section.

TS is online (full-color) at journals.sfu.ca/ts/. Back issues, from Vol. 1, No. 1 to the current issue, are online. OSTIV members have complete access to *TS* online; non-members may access titles and abstracts. Members should contact the webmaster, Jannes.Neumann@t-online.de, for access. Back issues can be purchased from either the OSTIV Secretariat or, in the USA, by email from bernauld@juggernaut.com. A quick-start guide to access *TS* online is on the OSTIV website.

An index of *Technical Soaring* (Vol. 1 through Vol. 34) is at soaringweb.org/Soaring_Index/Technical_Soaring. Issues are indexed by author, subject and issue. Additional information on *TS* and information on OSTIV Publications can be found on the OSTIV website in a searchable Publications Index.

The name *Technical Soaring* and its cover layout are fully rights-protected and belong to the Soaring Society of America; they are used by permission.

Open Access Policy

Reader Rights. For the first twelve months following publication, only OSTIV members may download material. After twelve months, free download to all.

Reuse Rights. No reuse for the first twelve months, after which material may be reused in other works only with permission of the authors of the article.

Copyrights Authors retain copyright to the basic material. OSTIV retains copyright to the published version. Works that are inherently in the public domain will be noted as such on their title pages.

Author posting rights Author may not post copies of their articles on websites until twelve months after publication. After twelve months, author may distribute freely by any means and post to third-party repositories. Authors may distribute individual copies of their articles at any time.

Archiving. Authors may archive their own papers on the web and in Open-Access archives as follows. The version of the paper as first submitted to *Technical Soaring* may be archived at any time. The version as published may be archived in Open-Access archives starting 12 months following publication. OSTIV may archive papers as published at any time.

Machine Readability After twelve months, article full text, metadata, and citations may be crawled or accessed without special permission or registration.

Preparation of Manuscripts for Submission to *Technical Soaring*

Technical Soaring (TS) seeks to document recent advances in the science, technology and operations of motorless aviation. *TS* welcomes original contributions from all sources.

General Requirements Manuscripts must be unclassified and cleared for public release. The work must not infringe on copyrights, and must not have been published or be under consideration for publication elsewhere. Authors must sign and submit a copyright form at time of submission. The form is available at www.ostiv.org.

Layout Submit manuscripts in **single-column, double line-spacing** format. This is not a “camera-ready” layout but facilitates review and typesetting. Set up margins so the pages will print on both US Letter and A4. Use approximately 1 1/4 in. (3 cm) margins.

Language All manuscripts submitted to *TS* must be in English. Submissions requiring extensive editing may be returned to author for proofreading and correction prior to review.

Electronic files Acceptable data file formats for text are, in order of preference, PDF, DVI, Latex Source, Open Office, and all others including Microsoft Word. If in doubt, ask the Editor. Submit one file containing the complete paper including all figures and tables (for review purposes), and, separately, a complete set of graphics files containing the individual figures, one per file. Graphics files must be in one of the following formats: EPS (preferred), EPSF, PS, PDF, JPG (JPEG), GIF, TIF (TIFF), PNM, PBM, PGM, PPM, PNG, SVG, or BMP.

Length There is no fixed length limit. At the discretion of the Editor, manuscripts exceeding approximately 50 double-spaced pages (including figures and tables one per page) may be returned to the author for reduction in length.

Font For the text, use any common font in 12pt — e.g. Times, Helvetica, Courier or equivalents.

Structure Organize papers in sections, subsections, and, as needed, subsubsections. Preferred heading style is section headings centered in bold face; subsection headings left-justified in bold face; and subsubsection headings left-justified in italics. Do not number sectional units. Capitalize first letters only — do not use “all-caps” in headings.

Title Title block should include author name(s), affiliation(s), location, and contact info (email address preferred). In the title, capitalize first letters only — do not use “all-caps.”

Abstract All papers require a summary-type abstract. Abstracts must consist of a single, self-contained paragraph. Suggest 100 to 150 words. Acronyms may be introduced in the abstract, but do not cite references, figures, tables, or footnotes.

Nomenclature If the paper uses more than a few symbols, list and define them in a table in a separate section following the abstract. Define acronyms in the text following first use in text — not in the Nomenclature list.

Introduction The Introduction should state the purpose of the work and its significance with respect to prior literature, and should enable the paper to be understood without undue reference to other sources.

Conclusions Although the Conclusions section may review the main points of the paper, it must not replicate the abstract. Do not cite references, figures, or tables in the Conclusions section as all points should have been made in the body of the paper.

Acknowledgments This section may be used to acknowledge technical assistance, organizational sponsorship, or financial or other support. Inclusion of support and/or sponsorship acknowledgments is strongly encouraged.

Citations Cite with bibliographic reference numbers in brackets (e.g. “[7]”). When used as subject or predicate of a sentence, use “Ref. 7” or “Reference 7.” Do not cite Internet URLs unless the website itself is the subject of discussion.

References The list of References is placed after the body of the text, after the Conclusions but before any Appendices. List references in order of first citation in the text. Any format is acceptable as long as all citation data are provided. At a minimum, all types of entries require title, year and manner of publication. Provide full names of all authors. Do not list Internet URLs as sources.

Tables Tables must be provided as editable text. Do not submit graphic images of tables.

Figures Place figures and tables at the end of the manuscript, one per page, each with its caption.

Captions All figures and tables require captions. Captions should state concisely what data are presented. Brief explanatory comments are acceptable but any discussion of the data presented in a figure or table should be placed in the section of the text referring to it — not in the caption. Provide captions as editable text separate from the figure or table it presents. Do not use the caption to explain line styles and symbols — use a legend instead.

Color *Technical Soaring* is available online at journals.sfu.ca/ts. Printed hardcopies are no longer distributed. While color graphics are welcome, when presenting data, avoid using color to distinguish data sets — instead, use line styles, symbol shapes, and fill patterns.

Footnotes Use footnotes sparingly. Do not footnote to cite literature.

Numbering Figures, tables, footnotes and references will not be included unless they are referenced by number in the text. Numbering runs sequentially in order of first mention in the text. Figure and table numbers are maintained separately. Equations are numbered only if they are referenced by number in the text. Number every page.

Abbreviations Do not begin sentences with abbreviations. Otherwise, use “Fig.” for “Figure” and “Ref.” for “Reference.” Do not abbreviate “Table”. The abbreviations “i.e.” and “e.g.” are not italicized.

How to submit Submit manuscripts online at the *Technical Soaring* website or email files to the Editor. Include a copyright form (available at www.ostiv.org). Authors may also submit electronic media by postal mail — contact Editor for address. Upon receipt, the Editor will assign a paper log number, assign an Associate Editor to oversee the review process, and acknowledge receipt by email. Authors who do not receive acknowledgment within 30 days should contact the Editor.

Peer Review Manuscripts will be peer-reviewed before being accepted for publication. Authors are welcome to suggest names of reviewers and to contact the Editor or the assigned Associate Editor at any time for updates on the status of their review. Reviews will commence only when:

1. The manuscript begins with a title block and a summary-type abstract.
2. A nomenclature list is provided or, if only a few symbols are used, they are defined in the text.
3. An introduction is provided that states the purpose of the work and its significance with respect to prior literature.
4. All pages are numbered.
5. All figures, footnotes and tables are numbered and referenced in the text.
6. All references cited in the text are in the list of references, and vice versa.
7. All reference list entries include complete bibliographic citation data.
8. All figures and tables are provided with captions.
9. A completed and signed copyright form has been provided.

Charges *Technical Soaring* does not require a publication page-charge.

From the Editor

OSTIV Congress XXXIII

OSTIV Congress XXXIII will be held in conjunction with the 34th World Gliding Championships in Benalla, Australia, 8–13 January, 2017. We encourage everybody to attend and present their latest work. The call for papers appeared in *TS* 39:1 and may be obtained from OSTIV — contact admin@ostiv.org.

Open-Access, continued

In the last issue of *Technical Soaring* (Vol. 39 No. 1), we announced a new Open-Access Policy clarifying OSTIV's policies concerning use of articles appearing in *TS*. This policy now appears on the Table of Contents page. One minor revision addresses the question of authors self-archiving their material to open-access websites:

Archiving. Authors may archive their own papers on the web and in Open-Access archives as follows. The version of the paper as first submitted to *Technical Soaring* may be archived at any time. The version as published may be archived in Open-Access archives starting 12 months following publication. OSTIV may archive papers as published at any time.

When Submitting a Paper ...

We're always happy when authors submit their manuscripts to *Technical Soaring*. We encourage authors to submit via email directly to the

Editor-in-Chief. Some authors prefer to submit via the *TS* website, and that is acceptable too. (At some point it may evolve into the preferred method.) Some authors let third parties submit their articles for them, and that works as well. However you submit your manuscript, please be sure to include a copyright form (available at the OSTIV website) and follow up immediately with an email to the Editor-in-Chief to ensure that that it has been received. Your contributions are too valuable to risk them getting lost!

Publication Date

This issue is the second of Volume 39 of *TS*, corresponding to April-June 2015. For the record, the issue was published in March, 2016.

Acknowledgments

We gratefully acknowledge Associate Editor Mark Maughmer, who oversaw the review of the Frey paper in this issue.

Respectfully,

Judah Milgram
Editor-in-Chief, *Technical Soaring*
ts-editor@ostiv.org

Wind Tunnel Measurements on Details of Laminar Wings

Jürgen Frey

Juergen.Frey@tu-dresden.de

*Technische Universität Dresden
Institut für Luft- und Raumfahrttechnik
Arbeitsgruppe Experimentelle Aerodynamik*

Abstract

Flow visualization using oil in wind tunnel as well as in free flight have been conducted to show whether or not the pressure field of the fuselage does influence the position of laminar-turbulent transition on a glider wing. Within the wind tunnel campaign, valuable experience could be gained in visualization of laminar separation bubbles under free flight Reynolds numbers. In free flight, it could be shown that the fuselage does not influence the boundary layer of the wing to a significant spanwise extent. Moreover, winch launch is an appropriate way to conduct oil visualization in free flight. It even shows some significant and unexpected advantages. Moreover, the effect of details like fences and aileron linkage fairings on parasitic drag has been investigated under laboratory conditions. Fairings have been applied in closed, open and even cut configuration on the suction as well as on the pressure side of the airfoil. All details are clearly visible in the wake bucket, however, their effect on total drag can be considered rather small.

Introduction

Recent transition experiments on an Eppler 603 laminar airfoil showed that in free flight, a turbulent boundary layer occurred upstream from the position where it did in the wind tunnel. This is in opposite to what could be expected concerning free stream turbulence. The obvious reason for that is the dominant effect of the pressure gradient on the stability of a laminar boundary layer. There are significant differences in pressure distribution between wind tunnel and free flight caused by blockage effects in the open test section and perhaps also by displacement of the fuselage. Flow visualization using paint was intended to show whether there is a significant influence on the spanwise transition line caused by the body's pressure field. Prior to that, some "training" was intended in the tunnel.

A second topic that has been discussed in Idaflied circles for several years now is the effect of details such as fences on total drag. In 2006, a project had been initiated to measure the loss in overall performance by applying for example four additional pairs of fences on the wings of an ASW 28 (Fig. 1). The result was a decrease in maximum L/D of about 0.25 points for a single pair of fences [1]. Extensive efforts have been made to visualize the airflow around aileron linkage fairings.

Generally it has to be stated that a detailed investigation of these topics is best done under laboratory conditions. TU Dresden has a low speed wind tunnel (Fig. 2) that can be used for Akaflied projects to a certain extent. The wind tunnel department has at its disposal a wing section cut from a damaged Twin-Astir wing that can be installed in the open test section

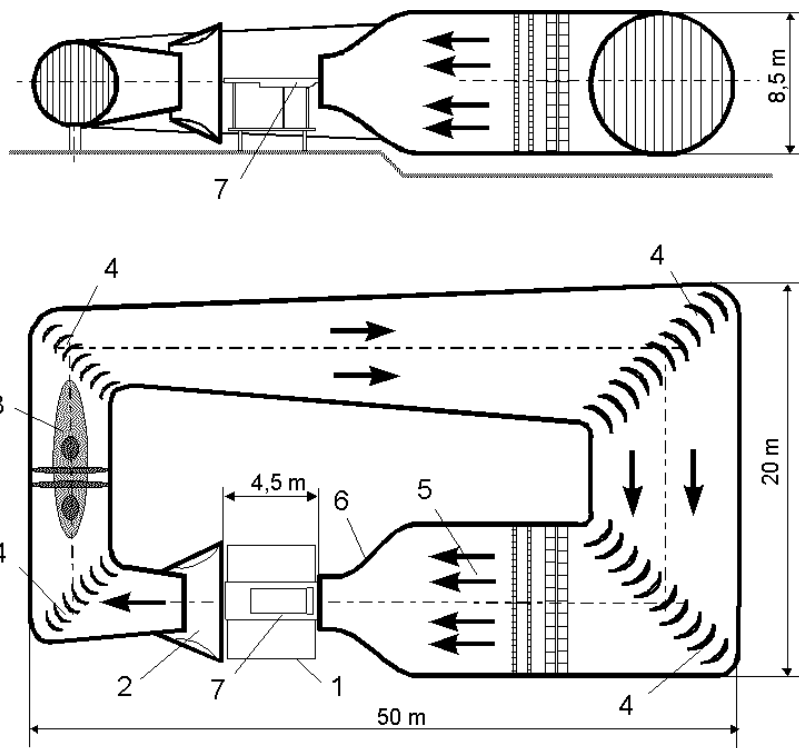


Fig. 1: ASW 28 carrying 5 pairs of fences

between two endplates. It has been used in the experiments described below. In February 2012, there was some free wind tunnel time available for visualization "training" as well as detailed flow investigations. Two years later, another wind tunnel campaign could be conducted to clarify some open questions resulting from the previous measurements.

Transition on a Laminar Airfoil

Comparing the pressure distribution on the E-603 wing glove used for transition experiments in wind tunnel and free flight, a distinct suction peak at the nose can only be observed in flight,



- 1 Test section**
- 2 Collector**
- 3 two-stage fan**
- 4 Guide vanes**
- 5 Settling chamber**
- 6 Nozzle**
- 7 moving belt**

Nozzle diameter: 3.0 m / 10 ft
 (2.0 m / 6.7 ft)
 L. of test section: 4.5 m / 15 ft
 (3.6 m / 12 ft)
 Contration ratio: 7:1 (16:1)
 Max. velocity: 40 m/s / 80 kts
 (60 m/s / 120 kts)
 Turbulence level: 0.1% ..0.5 %
 (for atmospheric: up to 30 %)
 Power consumption 300 kW max.

Fig. 2: Low speed wind tunnel of TU-DD

probably increased by the fact that the fuselage's maximum diameter and therefore pressure minimum is slightly upstream from the wing. In the tunnel however the pressure distribution is flattened by the closeness of the airfoil nose to the edge of the open jet. But most important is that the position of the main pressure gradient moves, which is responsible for laminar separation and turbulent reattachment (Fig. 3).

The laminar separation bubble is also evident in the pressure distribution. Applying a turbulator at 10% cord causes the bubble to vanish, in turn causing higher pressure between 50 and 55% chord (Fig. 4).

The aim of the intended experiment was to investigate whether the pressure distribution on the wing is significantly influenced by the fuselage. If this was true, an effect on transition point should be visible by its spanwise decay. Doing so, the gap was to be closed between the turbulent wedge at the wing root and undisturbed flow further outboard. Both have been investigated before using infrared thermography. However, flow visualization using paint requires much less instrumentation and is the only way to detect laminar separation in free flight.

Within the described experiments, the most classical mixture of soot, oil and kerosene has been applied. This worked surprisingly well, whereby a hint from the Akaflieg Braunschweig ("make it as wet as possible") proved to be very helpful. Turbulent wedges could be observed, originating from agglomerated soot.

Good agreement has been achieved between flow visualiza-

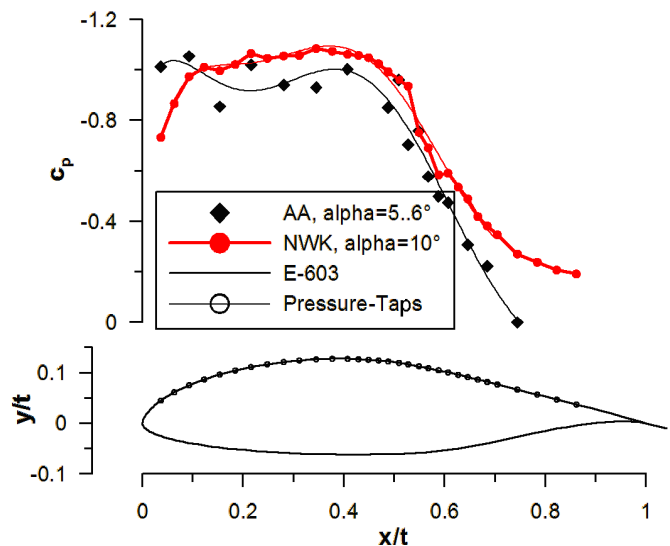


Fig. 3: Pressure distribution in wind tunnel and free flight, Eppler 603

tion and pressure distribution concerning position and dimension of the separation bubble, proving that the wing glove used for quantitative measurements does not significantly influence the boundary layer (Fig. 4).

A single trial has been made on the pressure side, which is in general the more interesting area for investigation and control

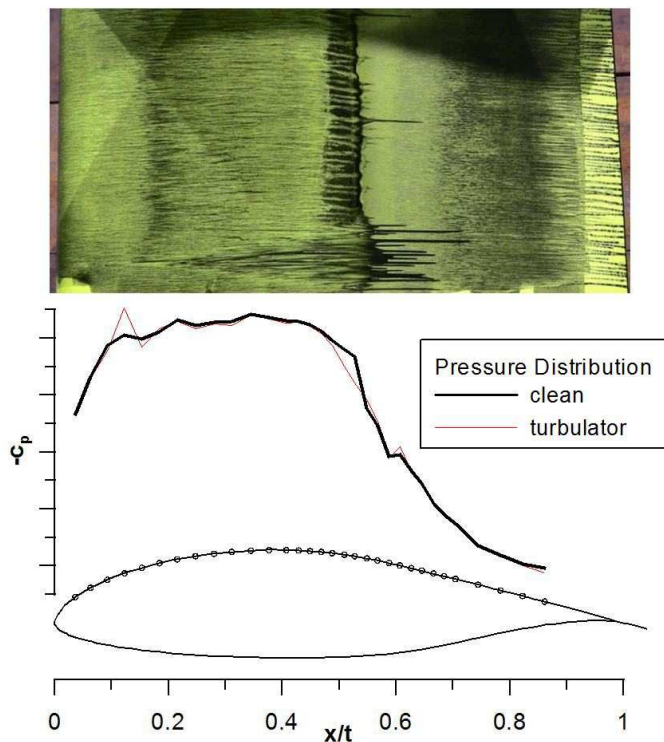


Fig. 4: Flow visualization and pressure distribution in wind tunnel, Eppler 603. Flow is from the left.

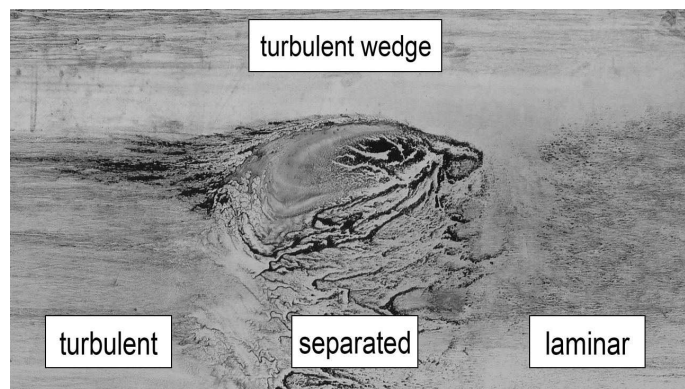


Fig. 5: Laminar separation on pressure side and turbulent wedge, Eppler 603. Flow is from the right.

of laminar separation bubbles. A big turbulent wedge occurred near the center line, painting interesting figures into the separated area. There may be doubt whether all the paintings found in caves are really made by our ancestors (Fig. 5).

In October, 2013, the intended free flight experiment could be conducted. Paint has been applied to the wing of Akaflieg Dresden's Twin Astir for six minute flights taking off with the winch. This kind of launch has even some advantages compared to an air tow. During climb, angle of attack and lift coefficient can be kept close to the values in untethered flight using a simple



Fig. 6: Flow visualization in free flight, Twin-Astir with Eppler 603 airfoil.

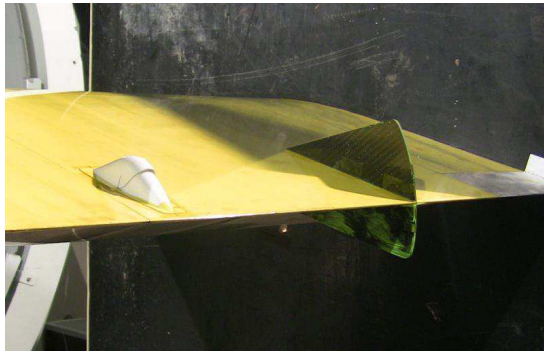
wool tuft sideways of the canopy, just leading to slightly higher airspeeds than normal. In opposite, the tow aircraft dictates the speed for take off and its wake strongly distorts the glider's lift distribution. Hence, there is no need to cover the area of interest for takeoff. Finally, turn around time is shorter with the winch, as only one test case can be investigated during a single flight anyway.

Within two tests, a significant camber in the transition line, which would prove the fuselage's influence, could not be found (Fig. 6). In consequence, wind tunnel blockage is probably the main guilty effect.

Fences and Fairings

Besides more visualization to get an overview, the wing segment's wake has been extensively investigated using pitot-tubes to detect total pressure loss.

Michael Greiner (Schleicher) had provided a drawing of a fence used with the ASW 28 and Andreas Lutz (Schempp-Hirth) sent two Arcus fairings as well as the prepared ASW 28 fairing he once had used for free flight investigation. Considering the



(a)



(b)

Fig. 7: Experimental setup for wake measurements. (a) Arcus-fairing on suction side and fence; (b) fairings on both sides, Arcus (suction side) ASW-28 and Arcus (pressure side)

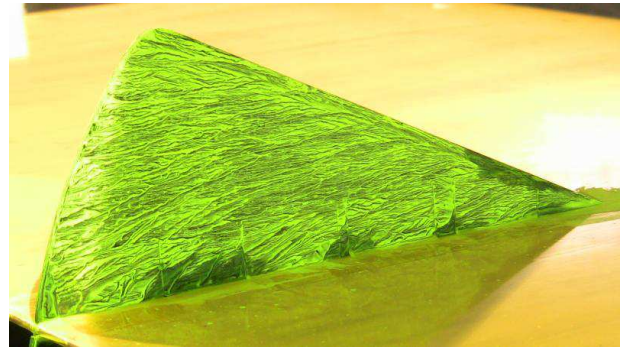
ratio between the chord length of the Twin-Astir's wing root and that of the ASW's outer wing, the fence has been scaled by a factor of two for similarity (Fig. 7(a)). Moreover, the Reynolds number could be kept high without running the tunnel at its limit for longer times.

In contrast, the aileron linkage fairings could only be applied in their actual size. However, there is no reason to scale them because these fairings naturally tend to be smaller for double seaters, as thicker wings provide more space inside.

The fairings have been applied on the suction side as well as on the pressure side of the wing (Arcus). In the case of the ASW 28 a single fairing only is applied to the pressure side for practical reasons. Application on the lower side is of interest as being representative of negative flap settings, when the airfoil develops a concave shape on its upper surface (Fig. 7(b)).

At first, some more modern art has been created that leaves quite a lot of room for interpretation (Fig. 8).

In the contour plot of total pressure, the fence is clearly visible (Fig. 9(b)). The height of its wake is about 150mm, which is, considering the scale factor, 1% of the half span for a standard class glider. The magnitude of the wake bucket is, compared to that of the airfoil, clearly less than half. So the total drag increase should be less than 0.5% of the profile drag. Further



(a)



(b)

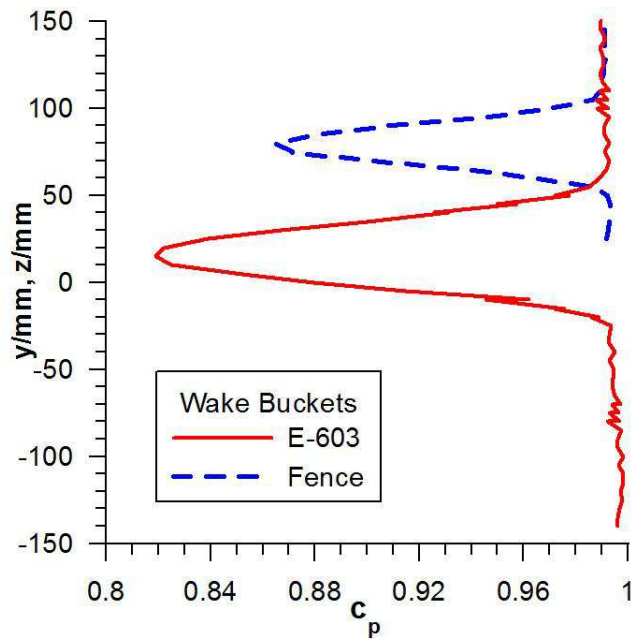
Fig. 8: Flow visualization on fence (a) and aileron fairing (b). View of wing upper surface from above, corresponding to configuration in Fig. 7(a).

estimation leads to an extra sink rate of only several millimeters per second, which should be considered as fairly negligible.

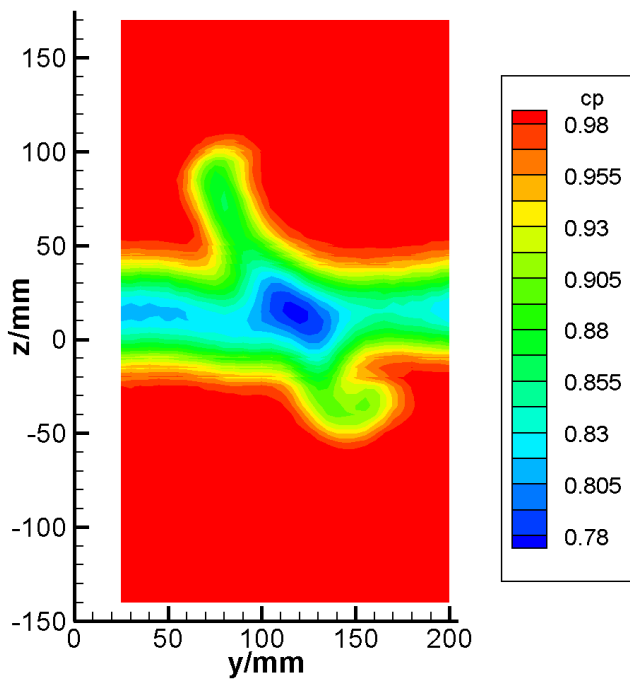
The only slightly tapered wing already causes a vortex sheet strong enough to distort the fence's wake by an angle of almost 45 degrees from trailing edge to pitot probe. Aileron linkage fairings instead did not lead to any recognizable change in the magnitude of the wake, but made its position move (Fig. 10). With a fairing on the upper side, the wake moved downward, indicating a local aerodynamic twist, due to the additional camber caused by the fairing. Increased circulation and a pair of free vortices induce additional downwash. Given this, the covers should cause induced drag rather than parasite drag. Nonetheless, this effect had to be added to C_{D_0} , as the lift distortion is independent from the over all angle of attack. On the pressure side, obviously the boundary layer is so thick, not even an effect on induced velocities can be proved.

Some discussion occurred about the question whether the most practical solution has been carried out by SZD with the Puchacz: Fairings are only attached to the fixed part of the wing, from which the push rod protrudes and the joint is open for assembly and maintenance. This is, of course, only applicable on the pressure side, but then provides quite a good opening for drainage (Fig. 11(a)).

Within an additional test campaign in February 2014, the ef-



(a)



(b)

Fig. 9: (a) Wake bucket of fence compared to that of airfoil; (b) vortex sheet downstream of the slightly tapered wing showing distortion of wake flow

fect of open fairings has been investigated. Only the upstream parts of the covers remained on the wing, the rear parts, which should be on the flap or aileron, respectively, have been removed (Fig. 11(b)).

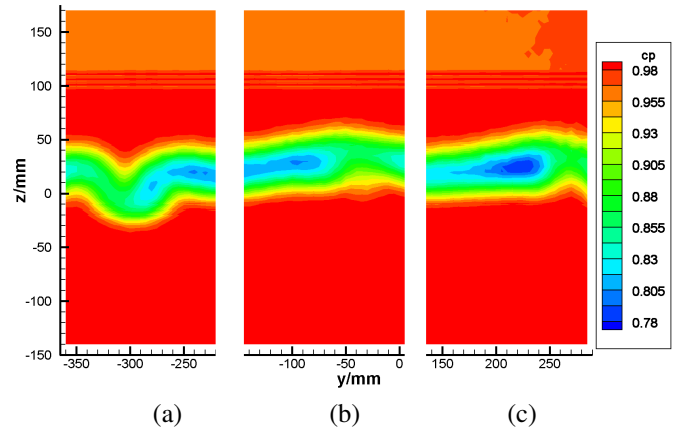
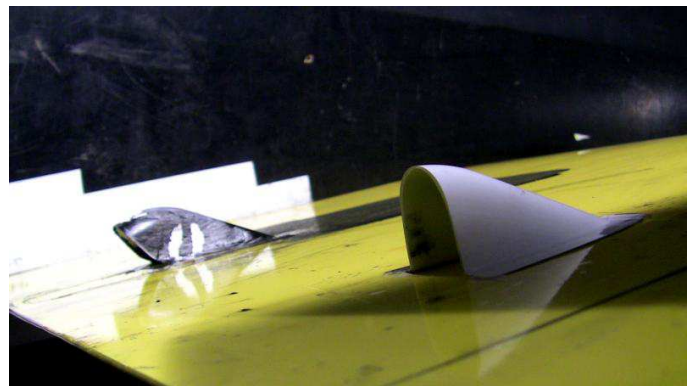


Fig. 10: Wake of covers (closed) on suction (a) and pressure side (b and c)



(a)



(b)

Fig. 11: Open fairings on Puchacz wing (a) and wind tunnel model (b)

As the wake measurement did not show any difference to the previous case, one of the fairings was cut at its maximum cross section to copy the Puchacz as close as possible. A slight increase of the width of the wake was to be observed, however, the circulation jump vanished (Fig. 12). The question of which ef-

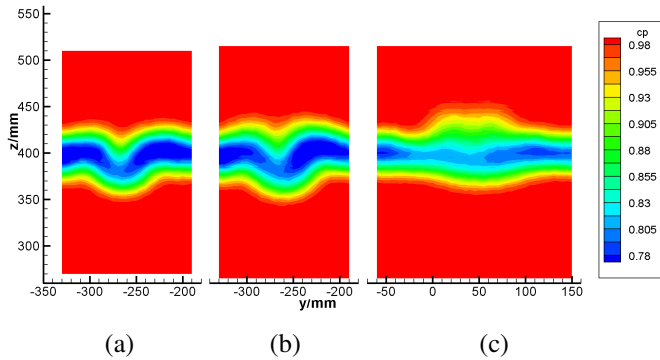


Fig. 12: Wake of covers on suction side: (a) closed; (b) open; (c) cut

fect is stronger warrants further discussion. Most probably, both are too weak to make any significant difference in total drag.

Tracking the downstream propagation of the wake bucket behind a full fairing, a slight increase of the sagging can be observed (Fig. 13). This indicates the presence of a pair of free vortices, even though these have to be very weak.

Conclusions

Oil visualization shows no significant influence of the fuselage's pressure field on transition and turbulent re-attachment on the wing. Good agreement between pressure measurement and flow visualization has been achieved in the wind tunnel.

Make oil paintings as wet as possible.

The wake of fences is clearly detectable, but they have only a very small influence on total drag.

The aileron linkage fairings' effect on viscous drag is barely recognizable, a remarkable effect on induced velocities is to be observed instead. Open fairings show no change, as long as the downstream opening does not exceed the boundary layer too far; big openings produce some viscous drag but make the induced velocity effect vanish. Both effects are probably negligible with respect to total drag.

Acknowledgments

The author would in particular like to thank Michael Greiner and Andreas Lutz who provided data and material out of the production line of sailplane manufacturers making these investigations possible. Special thanks is also due to Akaflieg Dresden who allowed me to pollute their Twin Astir with soot and oil.

The results presented here appeared previously in an Idaflieg report [2] and a TU Dresden internal research report [3].

References

- [1] Pätzold, F., "Messungen von Detailwiderständen an Segelflugzeugen zu den IDAFLIEG-Sommertreffen 2007 und 2008," Berichtsheft Nr. 35, Idaflieg, 2009.
- [2] Frey, J., "Messungen an Detailwiderständen unter Laborbedingungen," Idaflieg-Berichtsheft Nr. 39, Idaflieg, 2013.
- [3] Frey, J., "Sichtbarmachung von laminarer Ablösung und Grenzschichtumschlag an einem Laminarflügel durch Anstrichversuche; Nachlaufvermessung von Zusatzwiderständen." Test Report ILR-NWK-VG-12-477, TU Dresden, Institut für Luft- und Raumfahrttechnik, 2014.

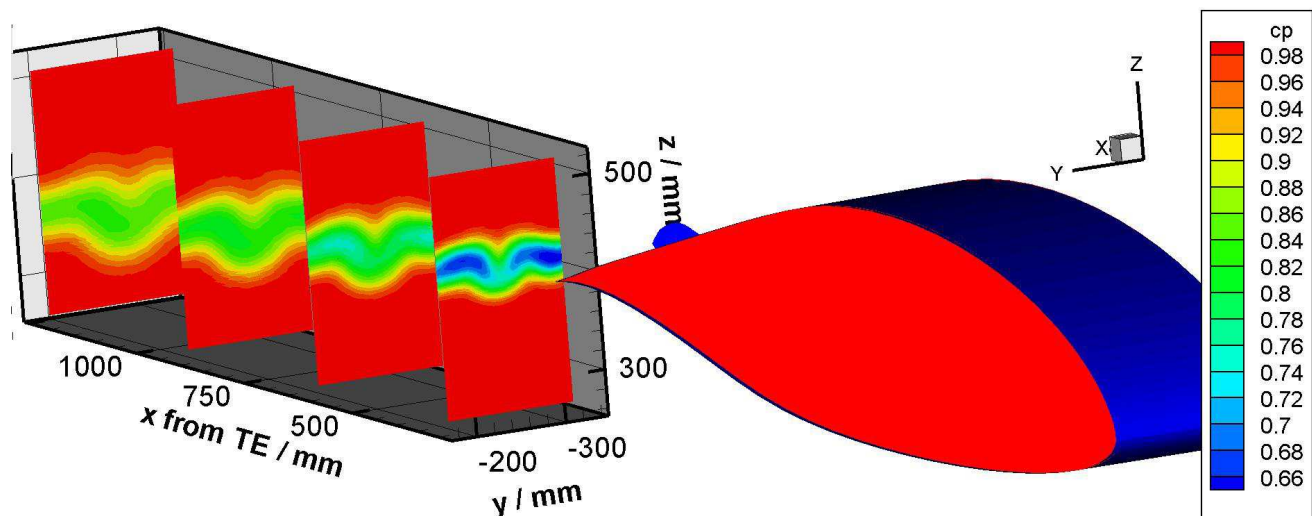


Fig. 13: Downstream propagation of the wake of a single Arcus-fairing (open) on the suction side of the Eppler 603